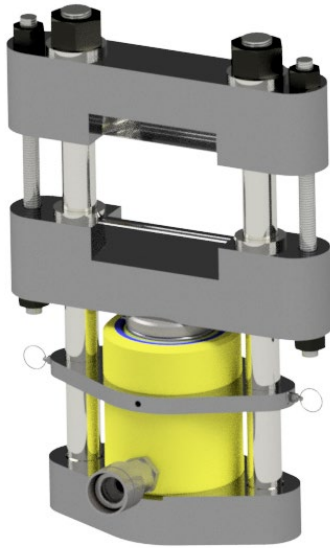
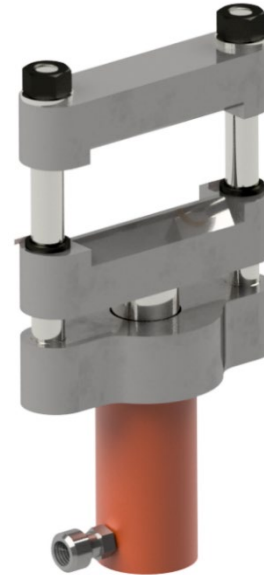


PIPE CRIMPER

Bulletin No. 160901ERX1
Version: 02.2017 REVA



SANDWICH MOUNT CRIMPER



UNDER MOUNT CRIMPER

PRODUCT DESCRIPTION

Pipe crimping is a method to prevent or restrict flow through a pipe by pinching the pipe such that it permanently deforms, thereby reducing the flow area within the pipe. Pipe or tubing larger than 3 NPS, or pipe in which the ductility of the material is an issue, should not be crimped. A Pipe Crimper should be used when crimping to evenly compress the pipe and prevent cracking or splitting at the fold, which has the potential to cause damage or injure personnel. All Pipe crimper models provided by EngRx conform to ASME article 313, Crimping of Metallic Pipe. Crimpers are offered with a capacity of 25/30 Tons or 55 Tons in sandwich mount or under mount variations.

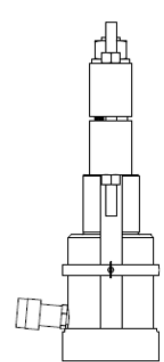
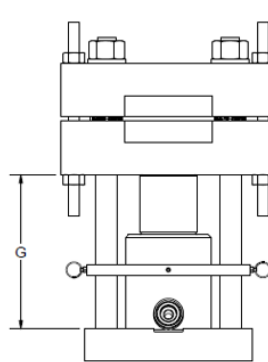
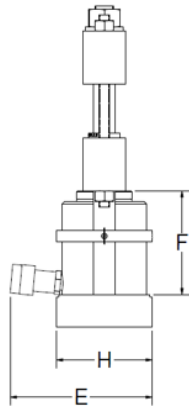
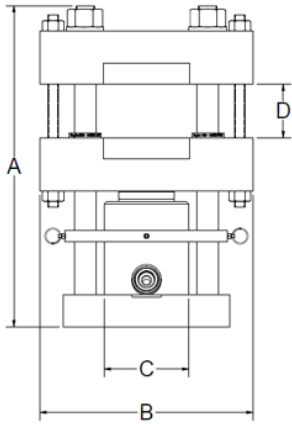
FEATURES

TECHNICAL INFORMATION

Sandwich Mount Crimper

(Open)

(Closed)

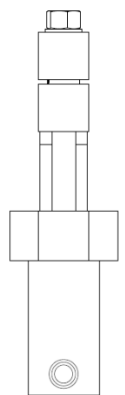
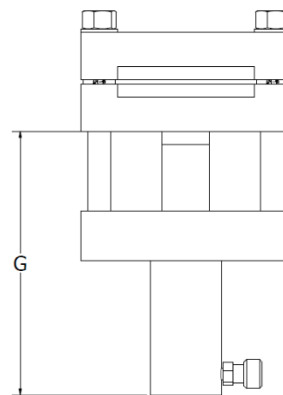
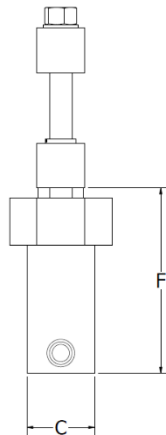
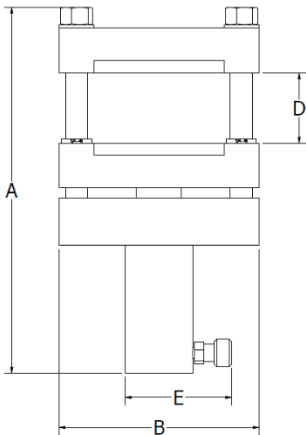


Pipe Crimper	Part #	Weight (lbs)	NPS Range	Dimension (Inches)							
				A	B	C	D	E	F	G	H
30 Ton	180815ERX1	52	1/2 - 2	15.0	10.0	4.0	2.5	6.6	0.6	7.2	4.5
55 Ton	180823ERX1	141	1 - 4	26.9	15.0	5.3	4.8	10.8	10.8	15.3	5.5

Under Mount Crimper

(Open)

(Closed)



Pipe Crimper	Part #	Weight (lbs)	NPS Range	Dimension (Inches)						
				A	B	C	D	E	F	G
25 Ton	CAN1401020	64	1/2 - 3	18.3	10.0	3.4	3.5	5.3	9.3	12.6
55 Ton	CAN1402002	187	1/2 - 6	26.2	17.0	5.0	6.1	7.1	12.0	21.2

HYDRAULIC CYLINDERS



Size	Material	Weight (lbs)
30 Ton Sandwich Mount	Steel Cylinder	15.0
55 Ton Sandwich Mount	Aluminum Cylinder	29.6
25 Ton Under Mount	Steel Cylinder	17.6
55 Ton Under Mount	Steel Cylinder	51.0

CRIMP BLOCKS

Sandwich Style Crimp Blocks

Size	Pair #	Weight (Per Pair)
30 Ton	180810ERX1	21.0 lbs
55 Ton	180822ERX1	60.4 lbs

*Available with or without Bolting



Under Style Crimp Blocks

Size	Pair #	Weight (Per Pair)
25 Ton	CAN1401020	22.6 lbs
55 Ton	CAN1402002	74.7 lbs

*Available with or without Bolting



STOP RINGS



*2 Stop Rings Required per Assembly

		NPS	Schedule
UNDER MOUNT CRIMPER - 55T	01-Feb	40	
		80	
		160	
		XXS	
	03-Apr	40	
		80	
		160	
		XXS	
	1	40	
		80	
		160	
		XXS	
1 1/4	40		
	80		
	160		
	XXS		
1 1/2	40		
	80		
	160		
	XXS		
2	40		
	80		
	160		
	XXS		
2 1/2	40		
	80		
	160		
	XXS		
3	40		
	80		
	160		
	XXS		
3 1/2	40		
	80		
	160		
	XXS		
4	40		
	80		
	160		
	XXS		
5	40		
	80		
	160		
	XXS		
6	40		
	80		
	160		
	XXS		
UNDER MOUNT CRIMPER - 25T			
SANDWICH MOUNT CRIMPER - 55T			
SANDWICH MOUNT CRIMPER - 30T			